





Our patent granted* product!

An adressable, LED lightbox, ideal for window and in-store displays.

Kinetik combines custom illuminated animations with high resolution printed graphics, bringing static images to life. We offer two methods for creating dynamic graphic displays; Kinetik White, which solely uses white LEDs; or Kinetik RGB, that intergrates RGB LEDs for full colour displays.

Why specify Kinetik?

Enhance visitor experience

63% of people say digital signage catches their attention. Kinetik allows you to engage your target audience with animated high impact, vivid graphics.

Drive sales, increase footfall and create consistency

Generate intrigue, attract shoppers and maximise campaign effectiveness by focusing attention on promotional campaigns. Kinetik provides you with another platform to display campaign content synonymous with online campaigns to drive your message into the physical environment.

Quick, effective, dynamic messaging

Kinetik is a modular system, designed for speedy installation and long-term flexibility. Plus, it's easy to update your display - simply upload a file via the integrated USB port, or connect Kinetik to your network for hassle-free updates keeping your content fresh and relevant.

Custom size

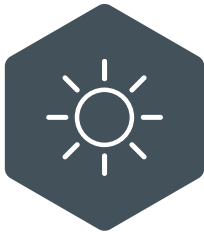
All our lightboxes are made to measure! Kinetik is made up of modular LED panels so that it can be specified to suit your design.

Easy maintenance

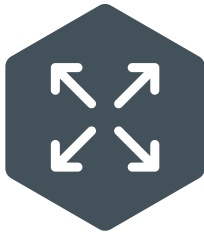
Kinetik comes with a 2 year manufacturing warranty and we can offer ongoing support and maintenance packages for peace of mind.

Key Features

Supreme Brightness



Custom Sizes



Light-weight



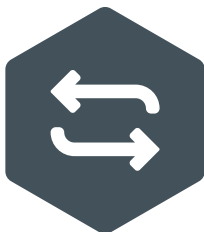
Cost effective dynamic display



Easy installation & maintenance



Easily interchangeable graphics



Wide variety of frame finishes

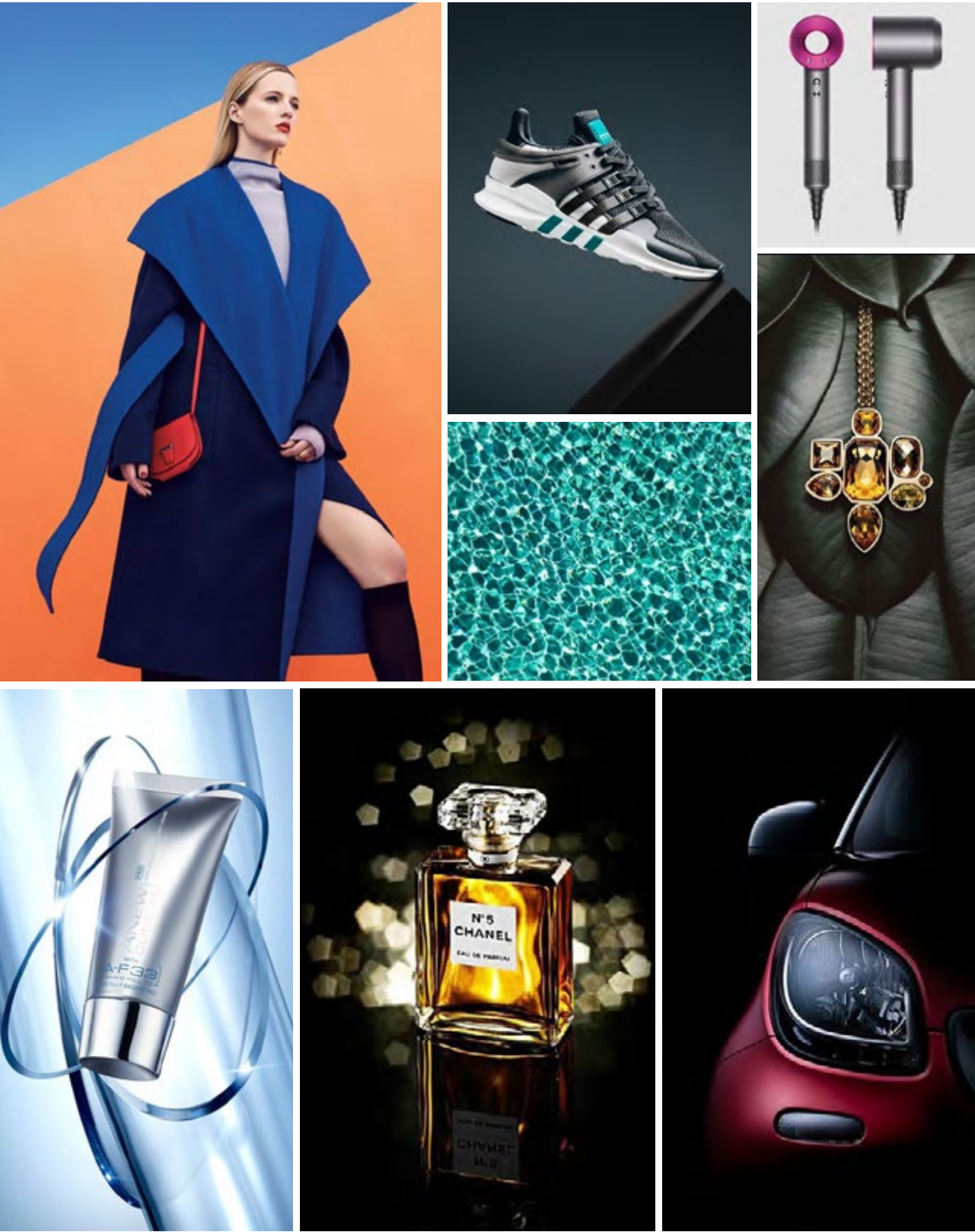


Reprogrammable content



Content Inspiration

Kinetik can be utilised for a multitude of enviroments and applications including Retail, Leisure Interiors, Architectural projects and Events. Whatever your project, we'll utilise our experience and expertise to create and eye-catching and impactful Kinetik Lightbox. Here are some images to help inspire and showcase the type of graphics and content Kinetik is perfect for.

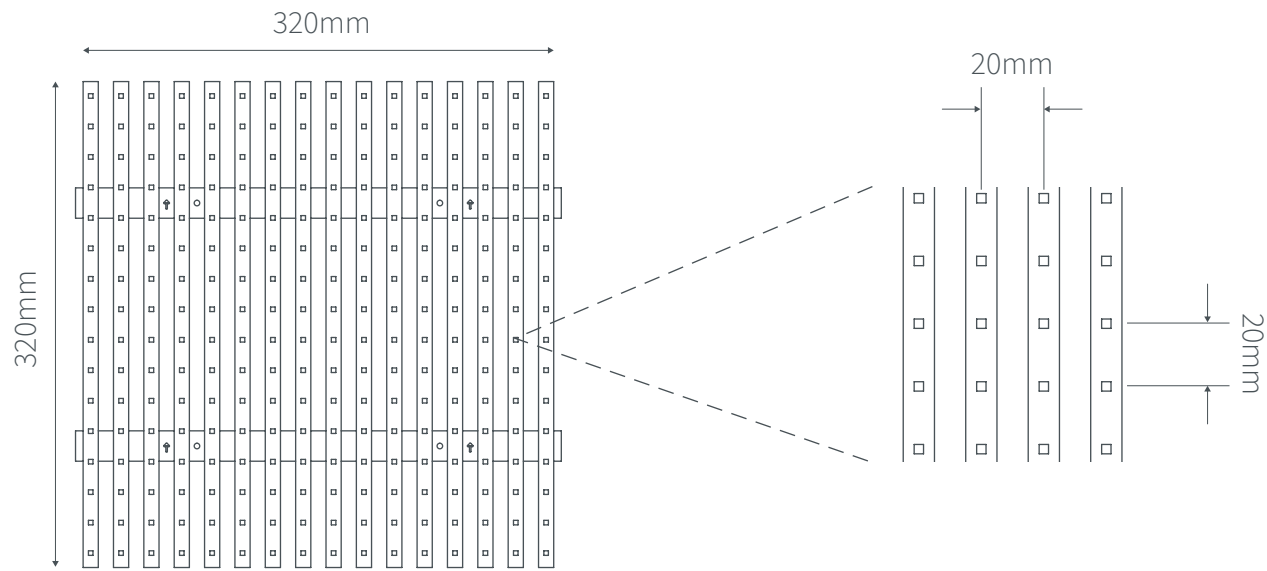


Kinetik LED Technology

Kinetik is made up of tiles (LED modules) measuring 320mm x 320mm, and have a pixel resolution (LED density) of 16 x 16, set at 20mm pitch, all of which sit within a 100mm deep extruded aluminium frame.

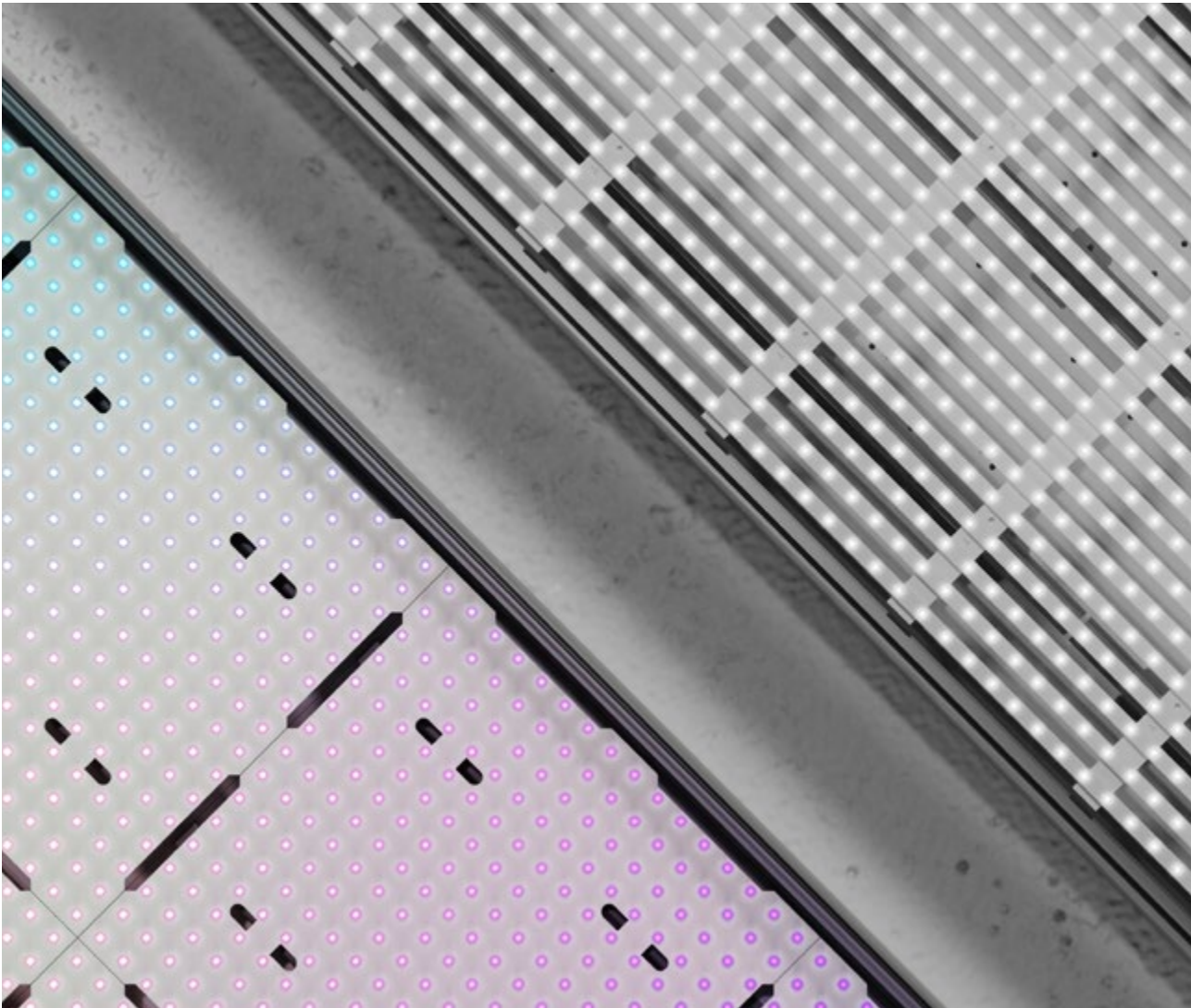
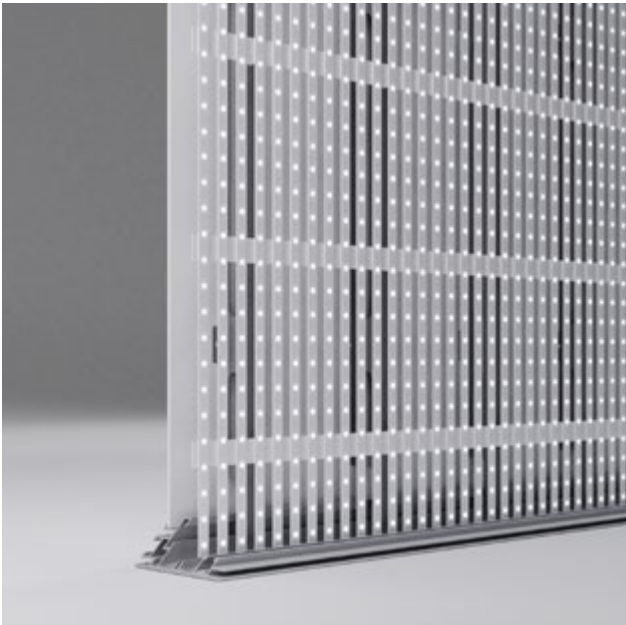
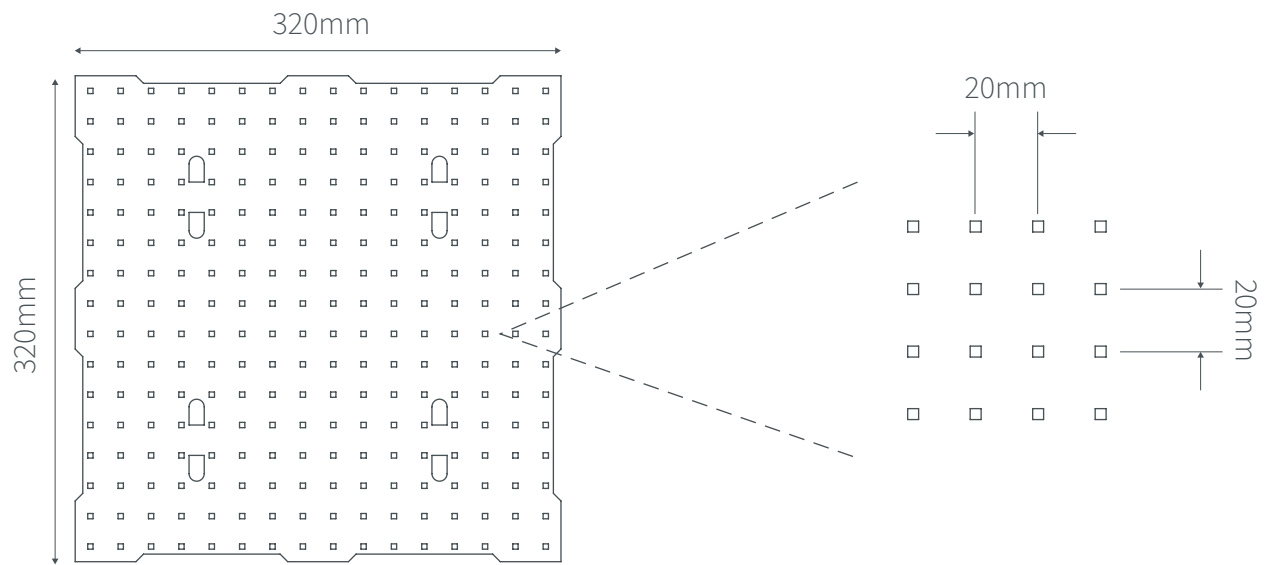
Kinetik White:

All white LED's, are positioned behind the graphic to highlight specific areas and smulate movement and visual effects, bringing static imagery to life.



Kinetik RGB:

Uses colour-changing LEDs that combine red, green and blue to produce over 16 million hues. Kinetik RGB has the ability to run a full colour video file enabling use to project moving content onto an unprinted lightbox surface, such as clouds. We can also enhance black and white printed imagery with colour to add a vibrant contrast to your content.



Important to note:
The overall size of the Kinetik lightbox must factor in the modular size of the LED panels. Each module measures 320mm x 320mm. The extruded aluminium frame also adds 33mm to the overall height and width. (16.5mm on each edge).

Kinetik Sizing Matrix

Important to note:
The matrix below shows the maximum standard size of the Kinetik Lightbox. We can configure any sized lightbox within these parametres. For larger sizes please get in touch. Please ensure that this is not the final size and only the tile size. For final sizes, please ensure to add 33mm to the overall height and width. (16.5mm on each edge).

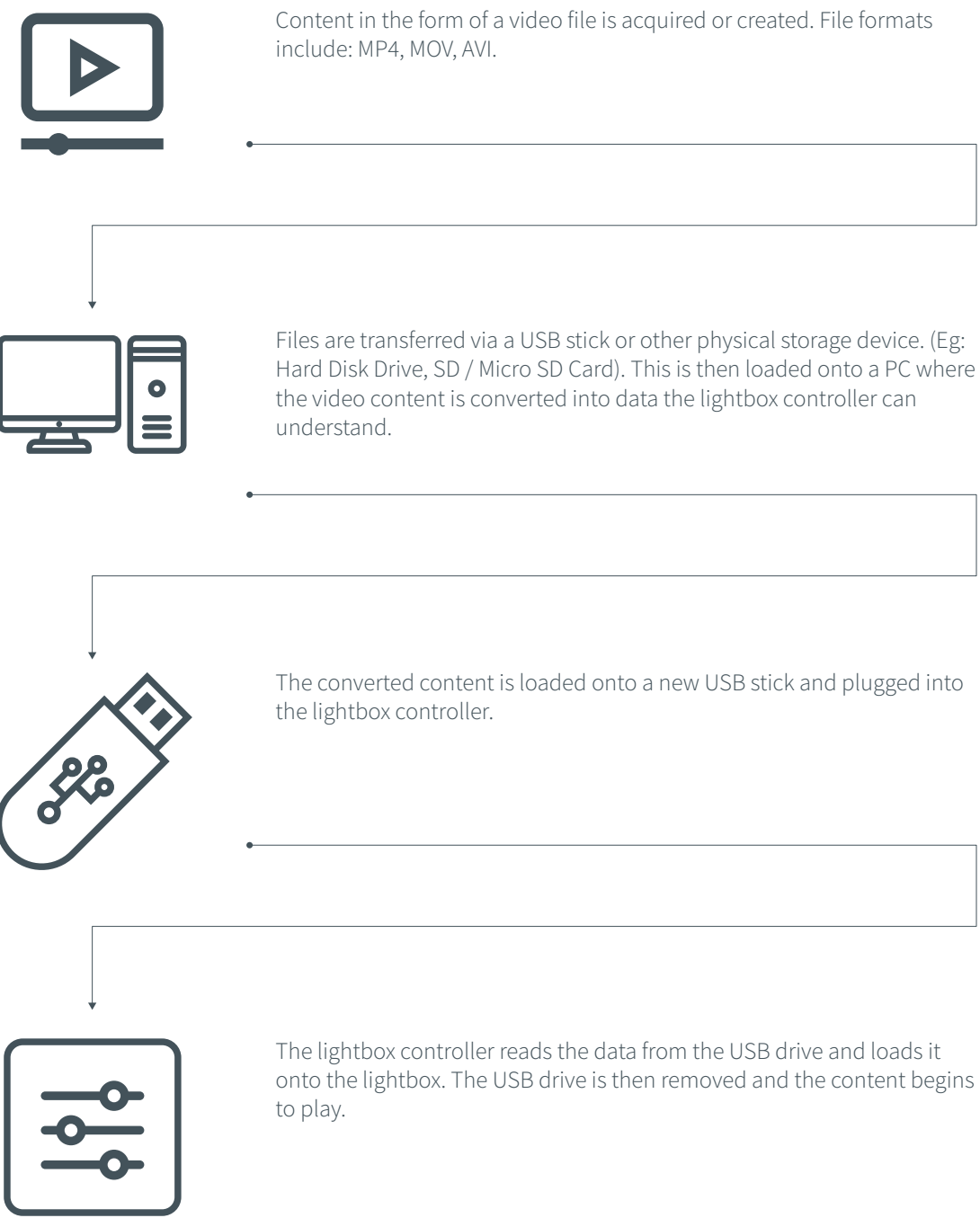
Box Size = Tile Size + 33mm added to the height and width.
Example: 6 Tile (1920mm +33mm) x 8 Tile (2560mm + 33mm) . Final Box size = 1953mm x 2593mm



Technical Information

	Kinetik White	Kinetik RGB
LED Module Size	320 mm x 320 mm	320 mm x 320 mm
Pixel Pitch	20 mm x 20 mm	20 mm x 20 mm
Input Voltage	90 - 260 V AC	85 - 265 V AC
Operating Voltage	5 V	5 V
Lightbox Depth	100 mm	100 mm
Minimum Size <small>Including lightbox frame. (16.5 mm each side).</small>	672 mm x 672 mm	672 mm x 672 mm
Maximum Standard Size <small>Including lightbox frame. Available in larger sizes.</small>	3233 mm x 5153 mm	3233 mm x 5153 mm
Standard Colour Temperature <small>Custom available on request.</small>	6500 K (+/- 300 K)	RGB
Max Power Consumption	170 W/m ²	170 W/m ²
Average Power Consumption	55 W/m ²	80 W/m ²
Brightness* <small>*Dependent on size. Figures shown based on 500 mm².</small>	1360 cd/m ²	425 cd/m ²
Approximate Weight* <small>*Weight excludes graphic. Based on 1m² lightbox</small>	19 kg/m ²	20 kg/m ²

Uploading Digital Content



*Remote content is available on request. Please get in touch.

Sequence Examples

Kinetik White
Lightbox off. Printed graphic not illuminated.

Video content at various stages of the programmed sequence.



We use widely available software to create the animation for Kinetik White, by setting up a sequence of frames consisting of black and white/ greyscale images, which run one after the other. (note: black means LIGHT OFF, white means LIGHT ON).

Once the animation is complete, it is saved as a movie file, which is then passed through a second piece of software that converts the 'video file to one which the Kinetik controller can understand.

Kinetik RGB
Lightbox off. Printed graphic not illuminated.

Video content at various stages of the programmed sequence.



By contrast, Kinetik RGB can play video content because the LEDs can portray all the colours in the file.

(The video file still needs to be converted before it can be played on the lightbox).

Thank you.

Get In Touch

+44(0)161 655 2100
info@unibox.co.uk
www.unibox.co.uk

HQ:
Greenside Way, Middleton, Manchester M24 1SW

