



LED Signage

In a world where only the strongest survive and where information overload is the norm, businesses of all types must fight to stand out from the crowd. The window of opportunity in which brands can capture the attention of passers-by is smaller than ever meaning they must utilise every available resource in order to make a lasting impression on potential customers. Illuminated signage exists to provide an ultra-effective solution for these challenges.

Eye-catching and visually exciting, illuminated signs allows brands in all sectors to assert their identity and strengthen their presence amongst competitors.

At Unibox, we work directly alongside an international network of brands and design agencies to create a wide range of LED signs, all of which can be customised to meet the aesthetic and functional requirements of different environments.

Kontour

The Kontour range of illuminated signage provides a sleek, attention-grabbing way of presenting brand messages, product information and logos. With powerful LED components integrated directly into laser-etched acrylic, Kontour signs remain highly visible even in the busiest of environments. By using lasers to cut shapes, patterns and letters into the acrylic panels, we are able to replicate intricate logos with millimetre precision to create branded signage that delivers.

Neonist

Neon signage attracts attention like nothing else. It is used to bring bursts of energy and retro charm into environments of all types, be it a bar, restaurant, nightclub, hotel, fitness centre, office or otherwise. Now, thanks to developments in LED technologies, its iconic aesthetic can be replicated using safer, more durable materials. Our range of Neonist signs provides an accessible, ultra-effective way of creating neon-effect signage that can be customised to suit client-specific briefs and brand guidelines.

Neon Flex

Neon Flex gives you access to the unmistakable, fluid aesthetic of traditional neon signage in a way that is both safer and more durable. It combines flexible LED tape with malleable lengths of silicon to replicate the tube-like appearance of neon signs and enable the creation of high-impact illuminated displays that fill wherever they are installed with retro charm and excitement.

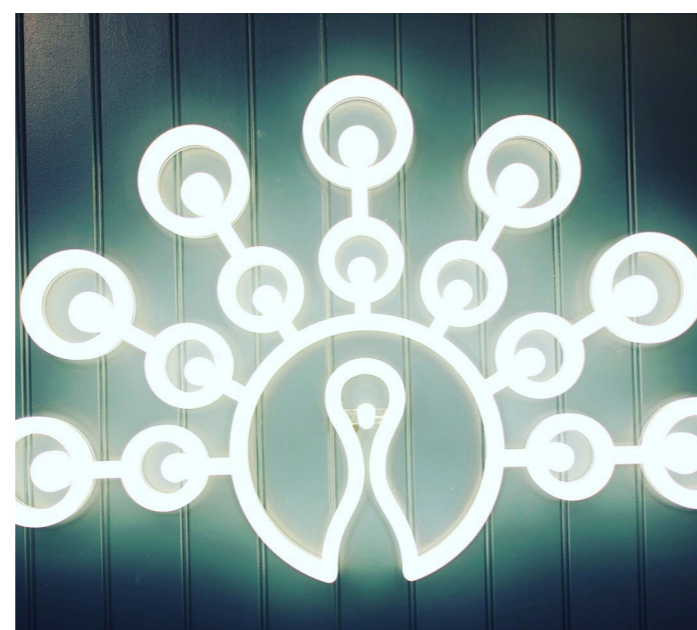
Illuminated Lettering

Our in-house automated letter bending machine allows the creation of letters, numbers and logos, using a selection of profile depths to create the desired effect and aesthetic. We can offer a range of LED options, from a fixed colour of white, to animated RGB lighting effects.



Inspiration

Our illuminated signage solutions are engineered to provide you with the freedom and flexibility needed to create bespoke LED signs that deliver. Here is a selection of some of our favourite projects as examples of what can be achieved with Neonist, Kontour and Neon Flex.





Illuminated Lettering

Bespoke 3D illuminated letters, numbers and logos.

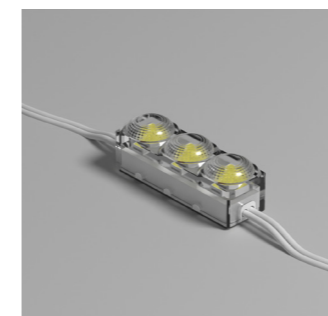
Our cost-effective 3D illuminated LED lettering provides an eye-catching way of creating visual impact. Produced with a fast turnaround, the characters can be mounted directly to any solid substrate or mounted to a panel for easy installation. The range of profile depths, colours and LEDs allow you to achieve your desired aesthetic.



LED Options

Our LED offering provides a varied spectrum of choice to suit the application and complexity of your illuminated lettering to ensure even illumination when lit. Our white LED options come in various sizes to ensure we can illuminate even the smallest of details and letters.

White LED

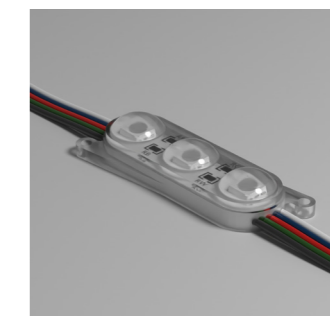


Triple Diode - Small
Light colour: White
Voltage: 12 V
Power: 0.48 W/pc
CRI: 80+
Colour Temp: 6500K
Efficacy: 105 lm/W
Beam Angle: 145°
Luminous Flux: 50lm/pc
Dimensions: L: 27mm x
 H: 9mm x W: 8,4mm



Triple Diode - Large
Light colour: White
Voltage: 12 V
Power: 1.1 W/pc
CRI: 70+
Colour Temp: 6500K
Efficacy: 145 lm/W
Beam Angle: 175°
Luminous Flux: 160lm/pc
Dimensions: L: 72mm x
 H: 10.2mm x W: 20mm

Colour LED

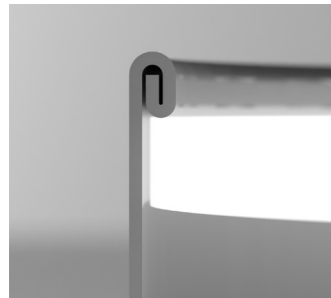


Triple Diode - Large
Light colour: RGBW (W=6500K)
Voltage: 12 V
Power: 0.86 W/pc
CRI: 80+ (White Channel)
Efficacy: 55 lm/W
Beam Angle: 165°
Luminous Flux: 48lm/pc
Dimensions: L: 65mm x
 H: 11.2mm x W: 22mm

Double folded profile specification

Our double folded tape option provides a neat, rounded front edge to your sign allowing your front fascia to be slightly recessed and encapsulated by the double folded tape. We have a wide range of finishes, depths and material thicknesses.

Profile Cross Section



Profile Colours



	Aluminium Profile Depth	60mm	80mm	88mm	108mm	120mm
Profile Thickness	0.5mm	—	—	—	•	—
	0.6mm	•	•	•	•	•
	0.7mm	•	•	•	•	•
Profile Colour	White (RAL 9016)	•	•	—	•	•
	White Matt (RAL 9016)	•	•	—	—	—
	Black (RAL 9005)	•	•	—	•	•
	Black Matt (RAL 9005)	•	•	—	—	—
	Anthracite Matt	•	•	—	—	—
	Aluminium Natural Silver (RAL 9006)	•	•	•	•	•
	Brushed Silver	•	•	—	•	•
	Brushed Gold	•	•	—	—	—
	Mirror Silver	—	•	—	—	—
	Mirror Gold	—	—	—	•	—
	Red (RAL 3020)	•	•	—	•	•
	Yellow (RAL 1023)	•	•	—	—	—
	Green (RAL 6016)	—	•	—	—	—
	Light Blue (RAL 5005)	•	•	—	•	•
Dark Blue (RAL 5002)	•	•	—	•	•	

• = Available — = Not available

Flat profile specification

Our flat sided profile provides an almost edge to edge seamless face positioning the fascia front an centre providing a minimal and elegant aesthetic to your illuminated signage.

Profile Cross Section



Profile Colours



	Aluminium Profile Depth	40mm	60mm	80mm	100mm	120mm
Profile Thickness	0.5mm	—	•	—	—	—
	0.6mm	•	•	•	•	•
	0.7mm	•	•	•	•	•
	0.8mm	—	•	•	•	•
Profile Colour	White (RAL 9016)	•	•	•	•	•
	White Matt (RAL 9016)	—	•	•	•	•
	Black (RAL 9005)	•	•	•	•	•
	Black Matt (RAL 9005)	—	—	•	•	•
	Anthracite Matt	—	•	•	—	—
	Aluminium Natural Silver (RAL 9006)	—	•	•	•	—
	Brushed Silver	•	•	•	•	—
	Brushed Gold	•	•	•	•	—
	Mirror Silver	•	•	—	—	—
	Red (RAL 3020)	•	•	•	•	—
	Yellow (RAL 1023)	—	—	•	—	—
	Green (RAL 6016)	—	•	—	•	—
	Light Blue (RAL 5005)	—	•	•	•	—
	Dark Blue (RAL 5002)	—	•	•	•	—

• = Available — = Not available



Neonist

A safer, more durable alternative to neon.

Neonist is the reimagining of traditional technologies to meet the needs and values of a modern world. Using energy-efficient LEDs and non-toxic materials, Neonist enables the creation of illuminated signs that boast the iconic aesthetic of neon without any of the long-lamented issues relating to durability, safety and reliability.



Neonist signs are built using solid sheets of optical-grade acrylic that are CNC-machined to create custom letters, branded signage, logos and more. With LEDs embedded directly into the acrylic and with the option of rounding any front-facing edges to replicate the unique, tube-like form of traditional neon signs, the intricate details of shapes can be reproduced with unbeatable levels of accuracy.

Colours

RGB+W



Tuneable White
(3500k - 6500K)



Fixed White



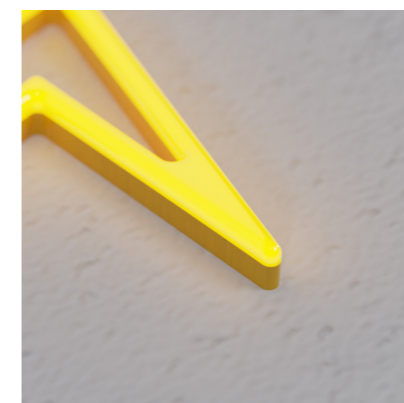
2700K

3000K

4000K

6500K

Finishing Options



Neonist Round

Neonist Round uses a 6mm pass when CNC-machining the acrylic panels to give the rounded aesthetic of traditional Neon.



Neonist Square

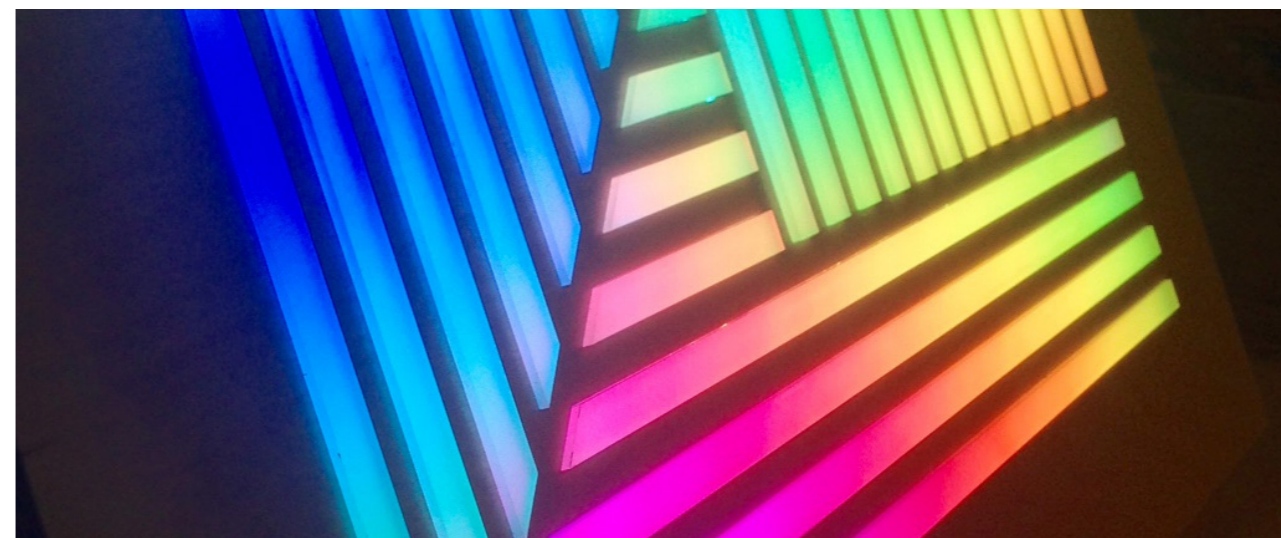
Neonist Square has a small internal radius to allow for the reproduction of intricate designs and brand logos.



Kontour

Striking LED signage that is precision-engineered to meet custom requirements.

Kontour enables the creation sleek, attention-grabbing illuminated signs that match brand-specific colour palettes, shapes and fonts. With powerful LED components integrated directly into laser-etched acrylic, Kontour signs remain highly visible even in the busiest of environments.



With every piece of acrylic being laser-cut by our team in-house, we are able to replicate intricate logos and custom fonts with millimetre precision to ensure that Kontour signs can be used to great effect by brands and businesses of all types.

Colours

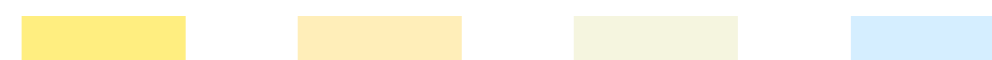
RGB+W



White
(2700k - 6500K)



Fixed White



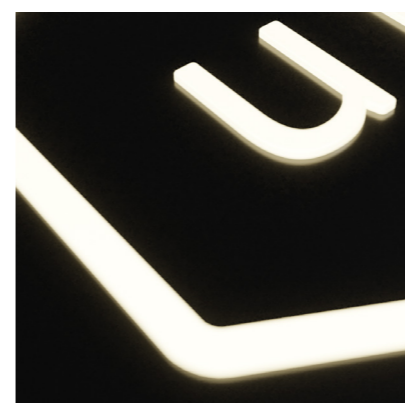
2700K

3000K

4000K

6500K

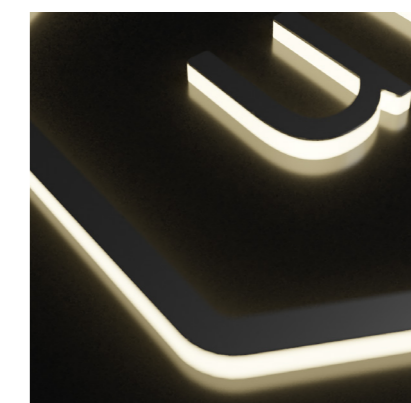
Finishing Options



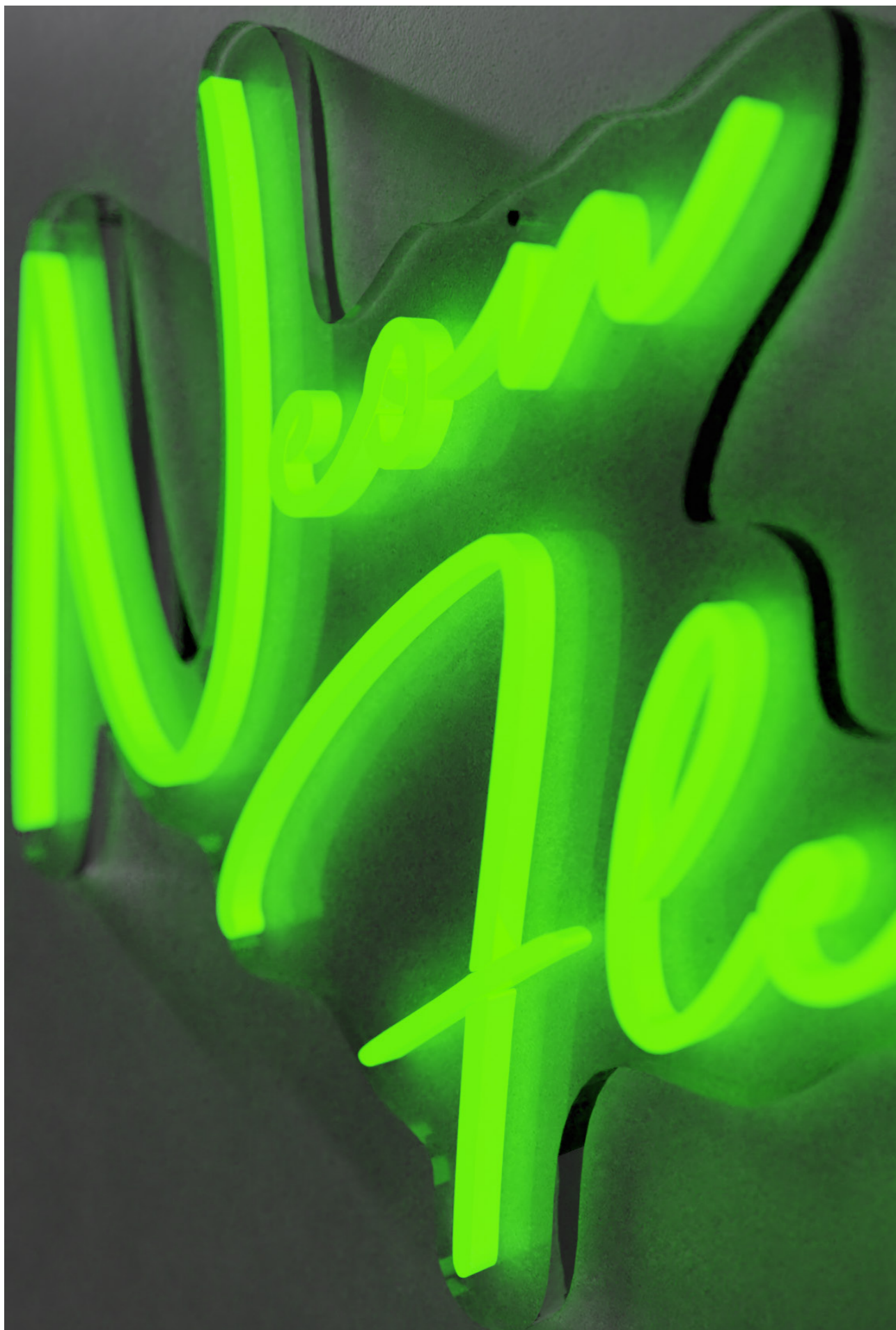
Raised letters



Flush letters



Raised letters with fascia



Neon Flex

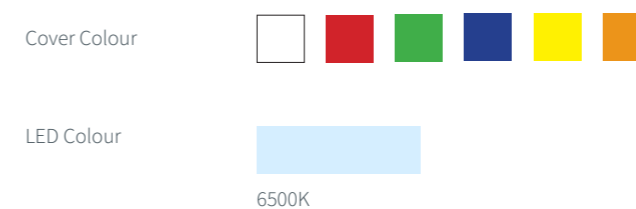
The ultra-flexible alternative to neon.

Neon Flex is engineered to provide brands and businesses with an accessible, affordable way of creating neon-effect illuminated signs that are guaranteed to make an impact. Malleable LED tape is housed inside flexible silicon moulds to recreate the distinctive, tube-like appearance of traditional neon signage.

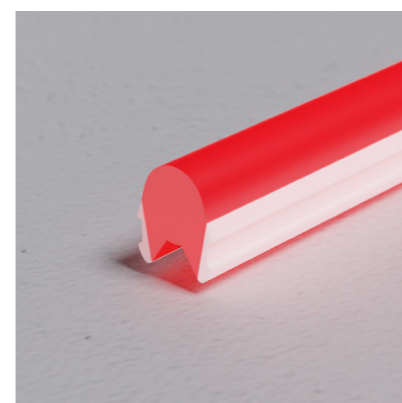


Built using materials that are dust-tight and waterproof, Neon Flex is a highly-durable range of illuminated signage solutions that are easy to install and readily-customisable. It is ideal for use when recreating the organic, fluid style of handwritten typefaces and bringing a burst of colour and energy into interior environments of all types.

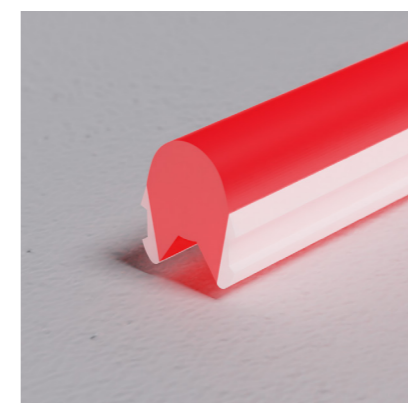
Colours



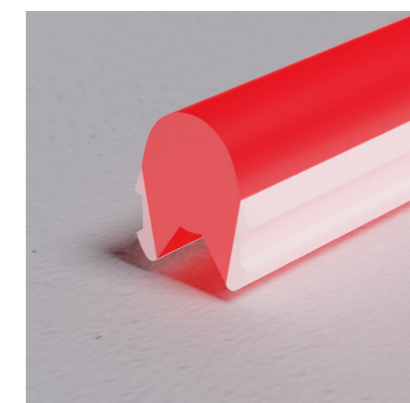
Sizes available



8 mm Width



10 mm Width



12 mm Width

Submitting a file

In order to ensure a quick turnaround, please follow our simple recommendations for supplying us with your file in the correct format.

File Formats

It is preferred to receive a DXF file, Adobe Illustrator file or editable PDF. The file should be 1:1 scale. However if the file is too big for the artboard, we will accept a scaled down version but this must be clearly stated within your file submission.



(If you are sending via an open application, please ensure you supply us with the high-res files, outline all fonts and embed all images).

Sending Files

Depending on the size of your file, you can send to us via email up to a file size of 6MB. For anything larger we would recommend using WeTransfer (This has a limit of up to 2GB per file transfer).



Finishing Requirements

Each of our products has a range of finishing options. Upon your submission, please specify the finishing option you would like as well as any specific material requirements.

Please specify the LED colour option whether this be White (2700K to 6500K) RGB or RGBW. We would ask you to specify the diffuser, cover or fascia plate that will be positioned in front of the LEDs

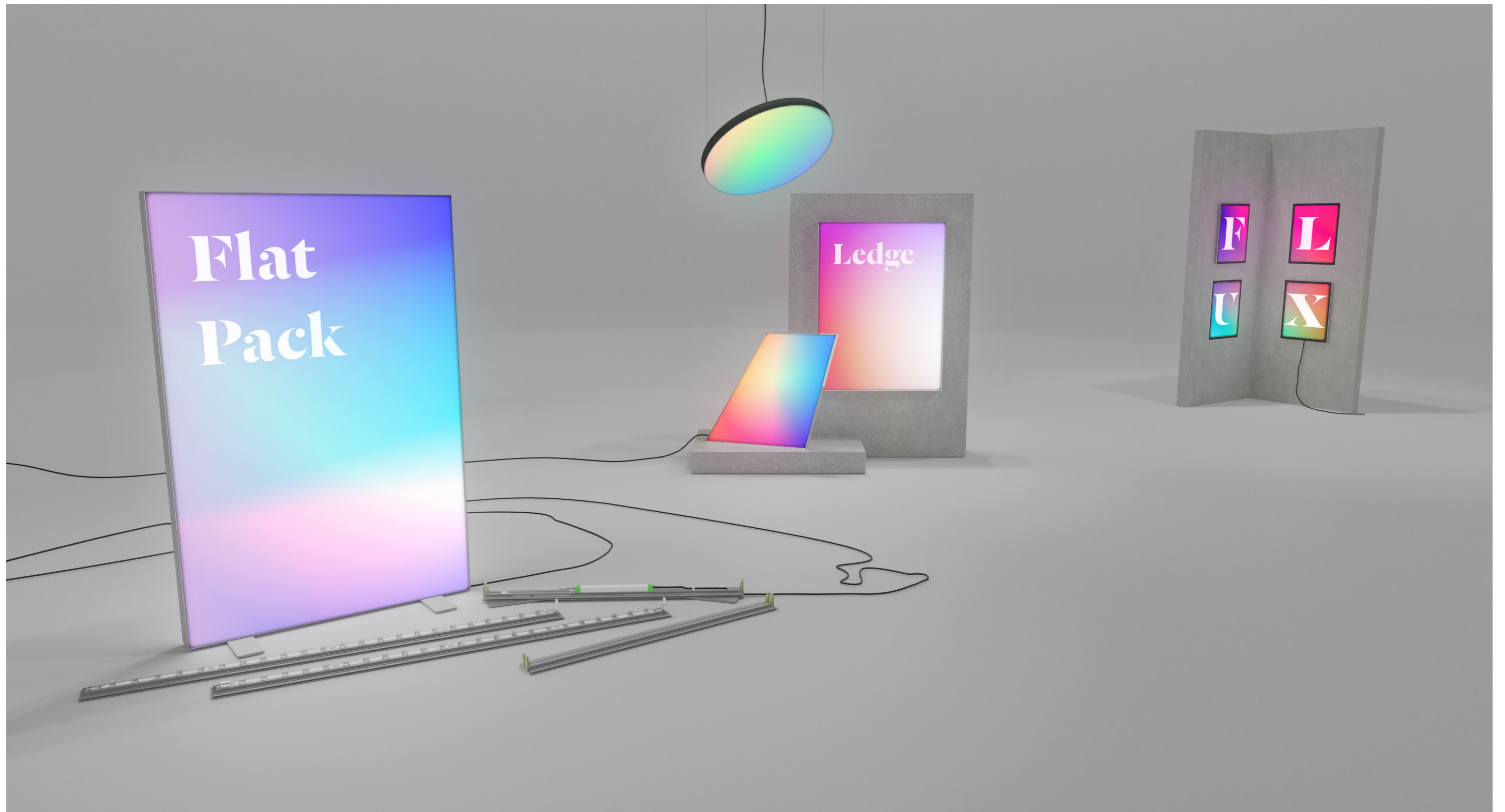
If you are at all unsure, please speak to one of our team for advice.



Lightbox Range

High-impact graphic signage with LED illumination.

LED lightboxes provide an ultra-effective way of creating visually striking illuminated signs that can be customised and updated to compliment branded environments of all types. With printed fabrics or rigid acrylic panels housed within sleek aluminium frames, LED lightboxes can be engineered to form double-sided, 3D, freestanding and suspended signs to maximise visibility in larger spaces.



Get In Touch

+44(0)161 655 2100
info@unibox.co.uk
www.unibox.co.uk

HQ:
Greenside Way, Middleton, Manchester M24 1SW

